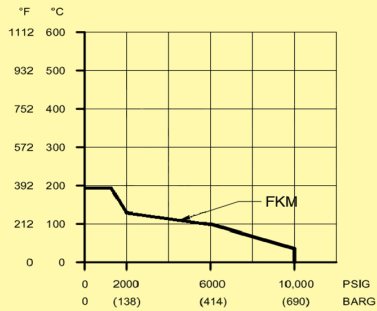
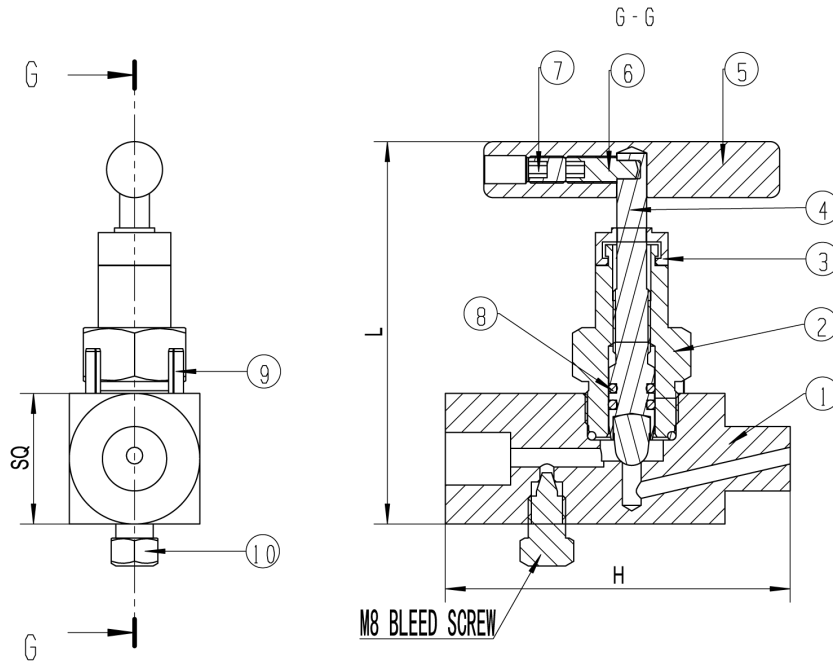


Pressure vs Temperature



Process/side	Gauge/side	H	L	SQ
1/4NPT Male	1/4NPT Female	2.913	3.248	1.102
3/8NPT Male	3/8NPT Female	2.913	3.248	1.102
1/2NPT Male	1/2NPT Female	2.913	3.248	1.102
3/4NPT Male	1/2NPT Female	3.071	3.248	1.102
3/4NPT Male	3/4NPT Female	3.071	3.405	1.260
1"NPT Male	1"NPT Female	3.228	3.720	1.575



10	BLEED SCREW	Carbon steel	01
09	Dwellpin	SS304	01
08	O-ring	FKM	02
07	FASTNING SCREW	SS304	01
06	SCREW	SS304	01
05	HANDLE	Carbon steel	01
04	NEEDLE/NEEDLE TIP	SS316	01
03	DUSTCAP	NYION	01
02	BONNET	Carbon steel	01
01	BODY	Carbon steel	01
SR.NO	DESCRIPTION	MATERIAL	QTY



DRAWN BY: LUKE CORRY

ENG. APPROVAL: DR

ALL DIMENSIONS IN INCHES/MM

TOLERANCES
(unless otherwise stated)

Fractional: $\frac{1}{64}$ " 0.4mm

Decimal: 0.06" 1.5mm

REVISION DATE: 27/07/2018

TITLE:

BBV BLOCK AND BLEED VALVE, SINGLE HANDLE
HARD SEAT, M x F, CARBON STEEL, 10000PSI

DRAWING NO: BBV-1-MxF-CS-10000